



Cumberland Valley
Animal Shelter

*The animals
have no voice
but ours.*

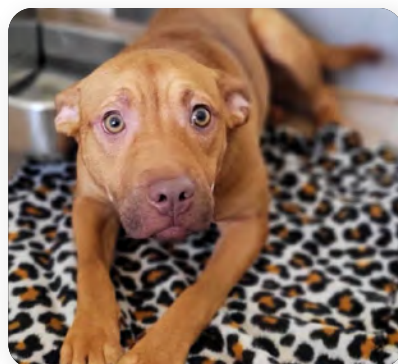


LEAVING YOUR LEGACY for a **BETTER TOMORROW**



Cumberland Valley Animal Shelter
5051 Letterkenny Road West
Chambersburg, PA 17201-8706
(717) 263-5791

www.cvas-pets.org



The value of your generosity

A planned gift to the Cumberland Valley Animal Shelter ('CVAS') can be an important and fulfilling part of your estate or financial planning. This brochure presents options which are available to you in how you can leave your lasting legacy with us.

Cumberland Valley Animal Shelter

The Shelter has been located at 5051 Letterkenny Road West in Chambersburg since late January 2013, in a modern 12,600 sq. ft. facility which is situated on 11 acres. A massive fundraising campaign began years prior to the opening at this location, which culminated in a state-of-the-art building, an expansion of services and improved utilization of the acreage which the shelter enjoys today.

CVAS serves residents of:

- » Franklin County
 - Boroughs of Chambersburg and Orrstown
 - Townships of Greene, Guilford, Hamilton, Letterkenny, Lurgan and St. Thomas
- » Cumberland County
 - Borough of Shippensburg
 - Townships of North Newton, Shippensburg and South Hampton
- » The shelter also provides assistance to residents of Fannett and Metal townships and South Hampton Township (Franklin County side).

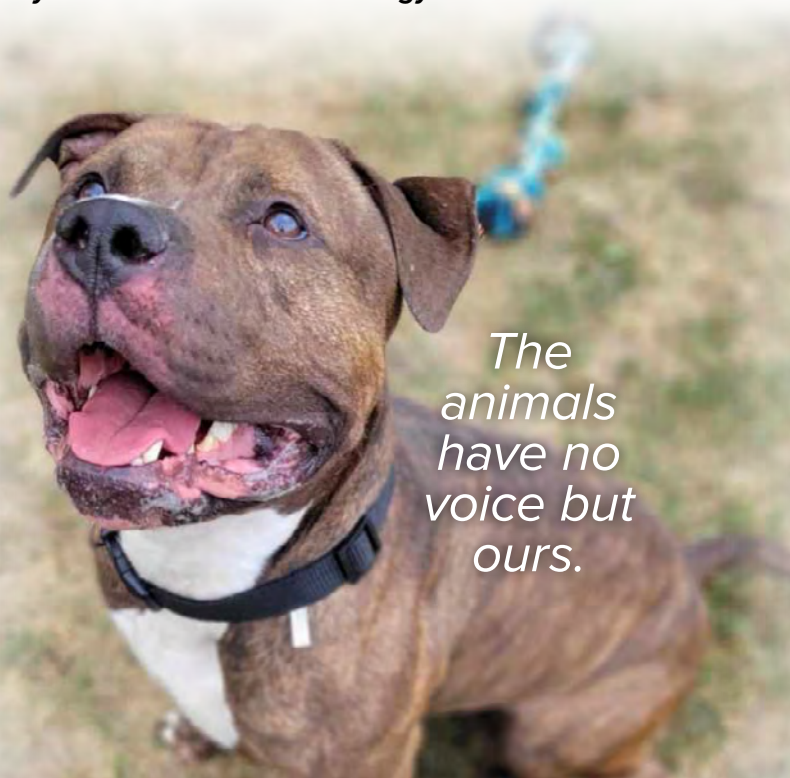
CVAS is seen as the sole provider for our type of services for most of the surrounding areas of Franklin and Cumberland counties.

Those we serve

Our mission is to shelter and care for animals (including medical care) for the abandoned, abused, neglected and lost, and to create lasting relationships with people so these animals can become pets and find safe, loving and forever homes.

The average adoption rate at CVAS is more than 750 animals per year. It is projected that the shelter could see at least a 50% increase in adoptions over the next five years. Recent years have seen approximately 1,200 pets total reunited with their owners!

To help ensure the financial sustainability of CVAS, please discuss your planned giving intentions with your attorney and financial advisor, to be aware that any decision and choice you make in providing your heartfelt gift is personally comfortable to you as part of your overall financial strategy.



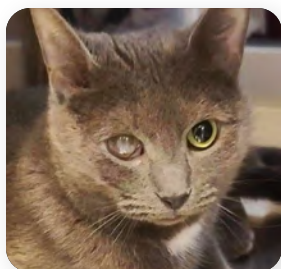
The animals have no voice but ours.



How your gift can make a difference

Due to ongoing increases for current pet owners for basics such as food and vet care, animal shelters are reasonably predicting future yearly increases in the number of owner surrenders – and a higher number of “stray” intakes due to uncontrolled breeding.

Challenges ahead — and your opportunity to help us now



Increasing numbers of both intakes and adoptions means an expanding workload for CVAS staff, increasing our spay/neuter activity and expanding the

workload in the surgical suite.

CVAS recognizes the hard work of its staff and volunteers in doing an admirable job with the many tasks at hand.

There are approximately five full-time and 31 part-time employees. As with any organization, all cost-of-doing business expenses continue to rise. CVAS regularly analyzes its operational costs for such budgetary items as facilities, services and supplies, and employee wages and insurance.

A major goal moving forward is to host future community spay-neuter clinics in a hope to decrease our cat intake. Another objective is to host rabies and microchip clinics on a regular basis – in an effort to improve the community health of the overall animal population.

Annual events foster community involvement and support

Charitable gifts, estate bequests and donations each year help support the shelter. CVAS also engages with the community raising funds to promote nearly 12 public events annually, including an Easter Hound Hunt, a Kitten Shower, the CVAS Dog Walk, a June golf tournament and a late Winter Cabin Fever Music Fest. Also, for additional monetary support, the shelter operates a thrift store which relies on donations and sales to generate income.

Your generosity is a way to continue our mission

The future is always filled with new opportunities and also many challenges. Among the most pressing is relying on consistent streams of financial support to meet both existing and unexpected needs.

This is where your gift is of unequalled importance: It allows CVAS added visibility financially to operate through all situations – in both good times and bad.

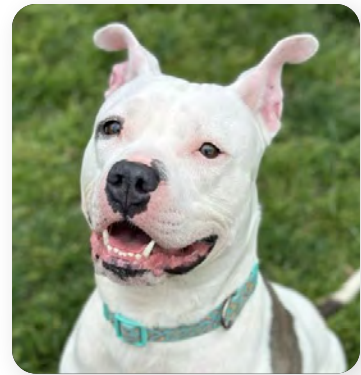
Your generosity is very much appreciated and is **key** to our ongoing growth and success in continuing to deliver our mission and services to those in our local communities!

Whether large or small, every day, the need is always present in our local communities to shelter and care for homeless animals. That's the mission of Cumberland Valley Animal Shelter and it always will be.

There is no reason to wait to make your gift

How you can ensure the future success of CVAS with a restricted or unrestricted planned gift

- A restricted gift to the CVAS Endowment Fund or the Second Chance Fund for any animal needing special medical care
- An annual Required Minimum Distribution (RMD) from an IRA
- Appreciated securities (stocks, bonds, mutual funds, treasuries) which offer tax benefits after one year
- Sponsorship support of a CVAS fundraising event
- A cash donation from personal savings or checking
- Shopping and donating sellable goods at the CVAS Thrift Store



Suggestions where your gift can make a lasting impact!

Interior equipment for sheltering animals and providing space for increased intakes:

There is an on-going need for the installation or replacement of new equipment such as the regular upkeep of doors, gateways, kennels and major care accessories. Also there is an increased importance on staff safety, meaning that isolation areas require more enhanced protection for staff and caregivers. Disposable personal protection items such as gloves, masks, gowns and etc. have become a daily expense.

Support for the future care of our buildings, equipment and grounds: Your gift helps cover increasing costs such as labor, supplies, utilities, equipment replacement, maintenance and upkeep of facilities, professional arborist and pest services, and other needs.

As a living or more permanent memorial: The 11 acres of grounds at CVAS include two expansive dog walks and a large open area with mature trees. A gift of a new shade tree, fresh plantings or materials for flower beds — also an outside bench or paved path — enhances our welcoming presence for visitors and prospective adopters.

Surgical and medical equipment: CVAS provides medical care if needed for our incoming animals awaiting adoption. An invaluable tool for diagnosis, the average blood analyzer for animals today exceeds \$15,000. It's one example that our commitment to medical care for animals is not unlike the equipment, tools and skill needed for humans. Escalating costs for care and especially medications continue to exert pressure.

Training and professional staff development: CVAS has developed processes and procedures which are often shared with other area shelters. The ability to fund training whether in-person or virtual allows our dedicated team to stay current in our field of animal rescue and adoption.



Please review your giving intentions with your attorney and financial advisor. It is essential that any decision and choice made in providing a heartfelt gift is personally comfortable as part of your overall financial strategy. Sit down with us today — it doesn't cost anything to discuss a future gift to CVAS!

**Cumberland Valley Animal Shelter
Chambersburg, PA 17201-8706
www.cvas-pets.org
(717) 263-5791**

